

# Meet The Team

## The Directors and Management



**Claire Griffiths**  
Manager, Keyworker ,DSL and  
SENCO(Level 3)  
Qualified to Level 3 childcare



**Sue Theis**  
Deputy Manager, Keyworker, Forest  
School leader and Health and safety  
role.  
Qualified to Level 3 in childcare

## The Practitioners



**Tamara Norgan**  
Supervisor and Keyworker  
Qualified to Level 3  
childcare



**Jackie Kelly**  
Keyworker  
Qualified to Level  
3 childcare



**Elaine Newman**  
Keyworker, Forest school



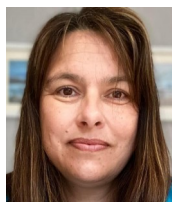
**Kerrie Greenhill**  
Cook and  
Pre-School Assistant  
Qualified to Level  
3 childcare



**Helen Martin**  
Pre-School Assistant



**Liz Davis**  
Pre-School Assistant



**Tammy Daley**  
Pre-School Assistant  
Qualified to Level 3  
childcare



**Heather Bicknell**  
Forest School Leader  
Qualified to Level 3  
childcare



**Jane Lower**  
Bank Staff -  
Pre-School Assistant  
Qualified to Level 3



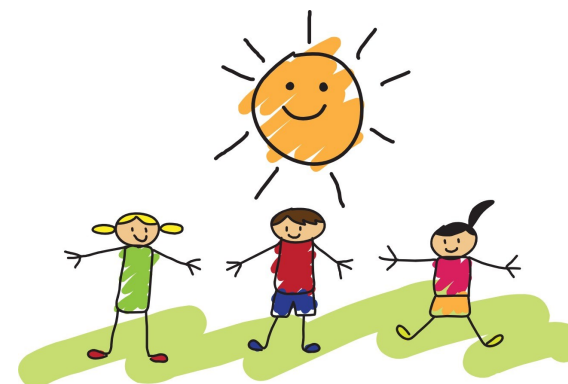
**Leia Garland-Apprentice**  
Qualified to Level 2 .  
Leia is currently doing her  
Level 3 apprenticeship with  
us.



**Courtney Collie-Apprentice**  
Courtney is currently doing her  
Level 2 apprenticeship with us.



**Lexi Bussell-Apprentice**  
Lexi is currently doing her Level  
2 apprenticeship with us.



# Pre-School On The Marsh

Pre-School On The Marsh is a Community Interest Company (CIC)  
which offers

sessions for children aged 2 years to 5 years and a Pre-School for  
the community that also accepts government funding.

Set in idyllic surroundings at Stanpit marsh, a place where children  
can learn through play and prepare for school under the supervision  
of a highly experienced and qualified staff team.

***"Children learn as they play. Most importantly, in play children  
learn how to learn."***

Directors: Claire Griffiths (Manager) and Sue Theis  
Pre-School location: TS Orestes, Stanpit Marsh, Christchurch, Dorset BH23 3ND  
Telephone: 07769210278 email: [enquiries@preschoolonthemarsh.co.uk](mailto:enquiries@preschoolonthemarsh.co.uk)



## Pre-School

### On The Marsh

#### Our Aims

- ◆ To provide a safe, secure and stimulating learning environment both inside and outside, where children can feel secure valued and confident and give them a sound basis for their progression to school.
- ◆ To help children develop a sense of achievement, irrespective of their needs and abilities, and to discover that learning is a pleasurable experience.
- ◆ To enhance the development and education of children in a parent involved setting so as to create an atmosphere of mutual respect.
- ◆ To offer quality affordable childcare early years learning in accordance with the early years foundation stage curriculum (E.Y.F.S)
- ◆ To ensure equality of opportunity for all children and their families.
- ◆ To provide fun and friendship for children and the adults concerned with their care.
- ◆ To provide individual care and attention to children by providing a high ratio of adults

#### What we offer your Child

- Care and education from highly experienced and qualified staff working on a high adult to child ratio
- Learning opportunities and assessment following the E.Y.F.S curriculum leading to approved learning outcomes
- The support of a personal Keyworker
- Fresh healthy food options daily
- Regular walks and outings in our beautiful surrounding areas
- Option of AM, PM or Full Day sessions and early drop off and late pick up options
- Opportunities for you and your family to be directly involved in the activities of the group and in your child's progress.
- Provided lunches (charge applies)
- Forest School Sessions
- Dedicated area with high staff ratios for 2yr olds

#### Events

Yearly events include:

Regular Walks on the marsh at Stanpit  
 Annual Easter egg hunt  
 End of year trips  
 End of year Celebration day  
 Christmas concert/nativity  
 Christmas party  
 Parent involvement days

**And much more added every year!**



## Pre-School

### On The Marsh

#### Pre-School On The Marsh

TS Orestes  
 Stanpit Marsh  
 Stanpit  
 Christchurch  
 Dorset

Tel: 07769210278 /07402024204

Email: [Enquiries@preschoolonthemarsh.co.uk](mailto:Enquiries@preschoolonthemarsh.co.uk)

#### Ages:

Pre-School On The Marsh accepts children from 2 years until 5 years old or when they begin school

#### Opening hours:

Morning sessions	9.15am – 12.15pm Monday to Friday
Afternoon sessions	12.15pm—3.15pm Monday to Friday
Full Day sessions	9.15am—3.15pm Monday to Friday
Forest School Sessions	Tuesdays and Thursdays

We also offer an early start and late pick up service please see attached information for details.

#### Costs:

Please see attached price list for full details of costs.

*Session rates are reviewed annually in April and an increase may occur*

**For more information or to book a place for your child please contact us on 07769210278 / 07402024204 Email: [Enquiries@preschoolonthemarsh.co.uk](mailto:Enquiries@preschoolonthemarsh.co.uk) or come and visit us for a play and look around we always welcome visitors to our setting.**